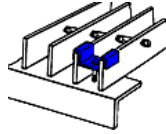
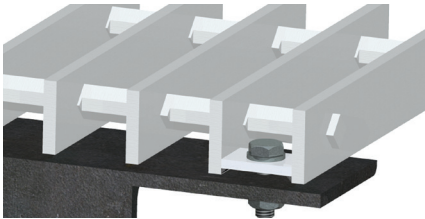


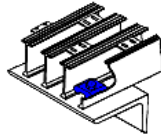
## SADDLE CLIP



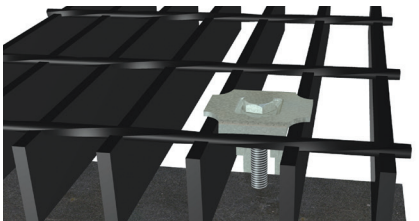
A special bent-clip type bar grating fastener for removable bar grating panels available in aluminum, stainless steel, and galvanized steel. Cross bars may need to be snipped in the field to facilitate placement of saddle clips.



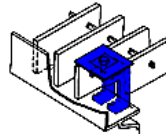
## PLATE FASTENERS



(aka LUGS/ANCHOR BLOCKS) Plate fasteners of 1/4" or 3/16" thick aluminum or steel may be shop welded by the grating manufacturer and used to fasten permanent or removable grating panels. Plate fasteners are recessed thus offering a trip-free surface.



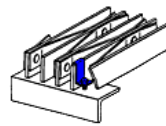
## G-CLIP



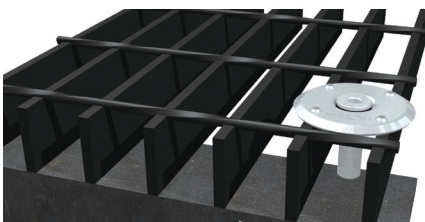
Available in aluminum, stainless steel, and galvanized steel used in conjunction with bar grating and embedded grating frames. Cross bars may need to be snipped in the field to facilitate placement of bar grating clamps.



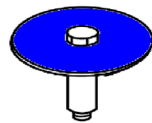
## Z CLIP



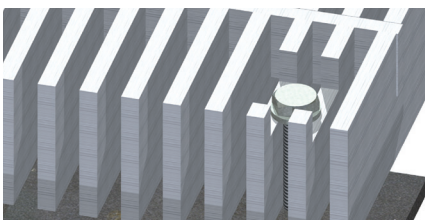
Especially helpful in holding down riveted grating, Z Clips are manufactured from stainless steel and are available in 1" (1" and 1-1/4" grating) 1-1/2" (1-1/2" and 1-3/4" grating) and 2" (2", 2-1/4" and 2-1/2" grating) with a pre-punched hole to accept a 1/4" bolt or TEK screw (by others).



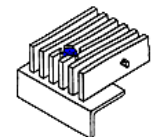
## HILTI DISK



For a wide range of grating fastening applications like: oil and gas installations, offshore and ship building, industrial construction, steel industry, other public facilities, among others.



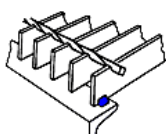
## COUNTERSUNK LAND



For close-mesh aluminum grating (7/16" bearing bar centers) a countersunk land may be drilled by the grating manufacturer for use with a 1/4" diameter TEK screw (by others).



## WELD INSTALLATION



Tack weld the third bearing bar from each panel side to the support member with 3/16" fillet welds x 3/4" long, plus weld in center of panel at intermediate supports when appropriate.